

Reliability in Action

# SDLG Grader G9165F

## Customer service is first priority

SDLG focuses on delivering outstanding customer service throughout a machine's life cycle. Its integrated service management system monitors and analyzes the machine's functions to ensure that it is working at optimum capacity, while service alerts notify customers about forthcoming maintenance checks. SDLG's attention to detail is one of the ways it continues to be the industry's No. 1 in terms of customer service satisfaction.

## Value-added service

SDLG's aftercare promise guarantees high quality service and offers experts who are on-hand to answer any questions or to solve problems. SDLG's service team uses advanced technology to support its maintenance checks in the field. Moreover, it aims to work with customers to define an efficient business solution.

## Global service network

SDLG's worldwide service and spare parts network provides fast, efficient and professional round-the-clock service, anytime, anywhere. SDLG exceeds customers' expectations.



Authorized Distributor  
**EXPLORE EARTH MOVERS PVT. LTD.**  
Kuleshwor-14, Kathmandu, Nepal  
Mobile No.: 9801187056 / 9801181361  
Email: admin@exploreintl.com.np  
www.panchakanya.com

A trading wing of



# SDLG Grader G9165F

SDLG Grader is all based on proven and reliable technologies, making for well balanced machines with excellent blade pull and blade down force.

- 1 Every SDLG grader is equipped with a tandem ready to do the job. It has +/- 15° oscillation to keep the blade level for the very best grading result. Equipped with a no-spin differential, heavy-duty bearings and heavy-duty chain drive, an SDLG tandem provides outstanding
- 2 For optimal steering and grading performance, SDLG graders are equipped with a heavy-duty front axle to handle steering, wheel lean and axle oscillation.
- 3 The unique SDLG circle drive system comes with 3 support shoes and non-greasing slide bushings for better grading and easier maintenance. SDLG graders also feature an asymmetric drawbar ball stud that can be rotated 180° in order to keep the drawbar in horizontal level position – vital when performing fine grading. Every SDLG grader comes with a 7-position blade
- 4 SDLG is committed to making the operator's job easier and more productive. The cab is designed to offer exceptional all-round visibility; with easy-to-use industry-standard controls, a comfortable seat, and powerful air conditioning.
- 5 G9165F is powered by Weichai engines. It has 6 forward and 3 reverse gears, and a possibility to add automatic shifting function.
- 6 Maintenance access is excellent with large side



**Member of the VOLVO Group since 2007**

**SDLG is part of Volvo Group** and one of the largest manufacturers of construction machinery in China, with a wide network of dealerships

# SDLG Graders: equipment and features

	G9165F
<b>Cab</b>	
Adjustable steering column	S
Air conditioning	S
Seat belt	S
Mechanical seat	S
Arm rests	O
Radio	S
Sun visor	S
ROPS/FOPS	-
Laminated glass	O
<b>Drivetrain</b>	
Manual transmission	S
Automatic transmission	-
Cruise control	-
Dual brake circuit	-
Automatic transmission	-
17.5 - 25 tires	S
14.0 - 24 tires	O
13.00 - 24 tires	-
Fenders	O
All wheel drive	-
Engine preheater	-
Drum brakes	S
Wet brakes	-

**Key**  
S = Standard equipment O = Optional equipment

	G9165F
<b>Hydraulics</b>	
10 section hydraulic control valve	S
Circle turn relief integral with main manifold	S
Cylinder accumulators	O
Blade float function	O
<b>Moldboard</b>	
7-position Blade Control System	S
10 ft blade	-
12 ft blade	S
13 ft blade	-
14 ft blade	-
Nylon blade track	S
<b>Attachments</b>	
Rear ripper	O
Front dozer blade	O
Front scarifier	O
Mid mount scarifier	O
Rear scarifier	O
<b>Other</b>	
Back up alarm	S
Moldboard worklights (4)	S
Cab mounted front worklights (2)	S
Rear mounted worklights (4)	S
Front mounted headlights/directional lights	S
Rear mounted brake lights/directional lights	S



## Special features

■ **The unique SDLG dual gear Circle Drive System** uses direct acting hydraulic power and two hardened drive pinions for exceptional turning and holding capability under full load. The system has 3 support shoes and non-greasing slide bushings for

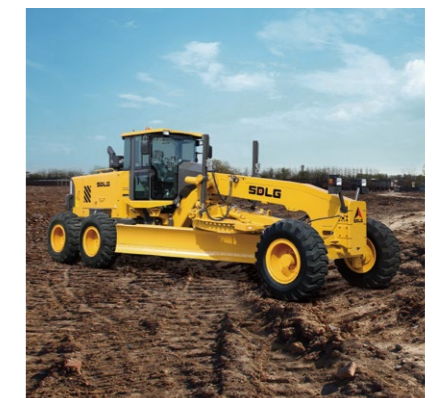
■ **The SDLG tandem** has +/- 15° oscillation to keep the blade level for the very best grading result. Equipped with a no-spin differential, heavy-duty bearings and heavy-

■ **The front axle on SDLG graders** is always heavy-duty and durable. With an excellent 16° oscillation and 18° wheel leaning capabilities combined with great steering angles, SDLG brings you a front axle flexible enough to handle all your

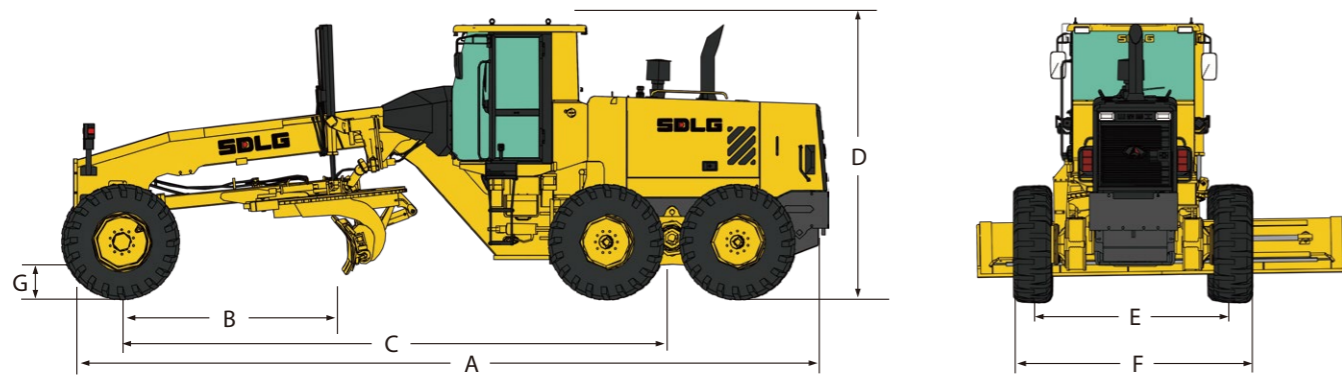
■ **The frames of SDLG graders** are of a box-type design to provide the best strength and durability. SDLG frames are prepared to take all attachments from the factory, for best performance. The excellent

■ **The operator environment** has been designed with safety and productivity in mind. Cabs are designed with larger glass areas and reduced column obstructions for best visibility, an adjustable steering column and air conditioning for best operator comfort.

■ **Blade pull and blade down forces** are best in class. This is achieved by optimum weight distribution and design. High blade pull force means that you will have the ability to move high loads on your blade, while



# SDLG Graders: specifications



Description	units	G9165F
<b>Dimensions</b>		
A. Overall length	mm	8975
B. Blade base (ISO 7134)	mm	2675
C. Wheel base	mm	6480
D. Overall height	mm	3240
E. Width - front tyre centre lines	mm	2111
F. Width - outside tyres	mm	2500
G. Front axle ground clearance	mm	610
<b>Operating weight</b>		
Base operating weight	kg	13850
<b>Moldboard</b>		
Width	mm / ft	3658/12
Slide distance (left / right)	mm	673
Maximum banksloping angle	°	90
Maximum ground clearance	mm	445
Cutting depth	mm	787
Tilt forward	°	47
Tilt backward	°	5
Max. tractive force	kN	86
<b>Front axle and articulation</b>		
Front wheel lean	°	18
Oscillation	° + / -	16
Minimum turning radius	mm	7600
Steering arc	°	50
Frame articulation	°	23

Description	units	G9165F
<b>Engine</b>		
Model		Weichai WP6G175E21
Type		In-line, watercooled, 6 cylinder, 4 stroke, direct injection
Rated power	kW @ rpm	129 @ 2200
Max. torque	Nm @ rpm	680 @ 1400
Bore and stroke	mm	105 / 130
Displacement	ml	6750
Emission standard		Stage II (GB 20891-2007)
<b>Transmission</b>		
Type		Counter-shaft, power shift
Forward gear 1, maximum speed	km/h	5.3
Forward gear 2, maximum speed	km/h	8.5
Forward gear 3, maximum speed	km/h	14
Forward gear 4, maximum speed	km/h	21
Forward gear 5, maximum speed	km/h	30
Forward gear 6, maximum speed	km/h	40
Reverse gear 1, maximum speed	km/h	5.3
Reverse gear 2, maximum speed	km/h	14
Reverse gear 3, maximum speed	km/h	30
<b>Circle</b>		
Pitch diameter	mm	1626
<b>Hydraulics</b>		
Maximum pressure	MPa	21
<b>Brakes</b>		
Service brake system		Full hydraulic single loop drum brake
Parking brake		Manual, inner drum on axle of transmission
<b>Capacities</b>		
Fuel tank	L	270
Transmission	L	28
Final drive	L	28
Tandems (each)	L	23
Hydraulic oil	L	132
Engine oil	L	26
Coolant	L	30

\* The right of final interpretation of the abovementioned parameters shall be reserved by SDLG. No further notice will be given in case of any change. Illustrations in the text may not always be the standard illustrations for this model.